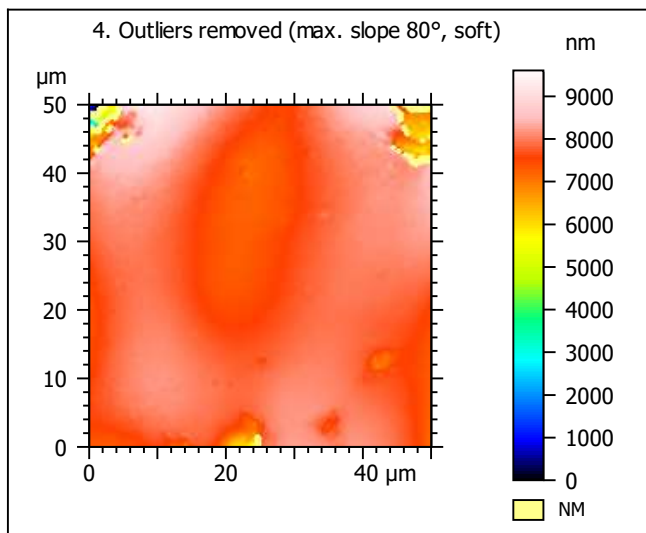
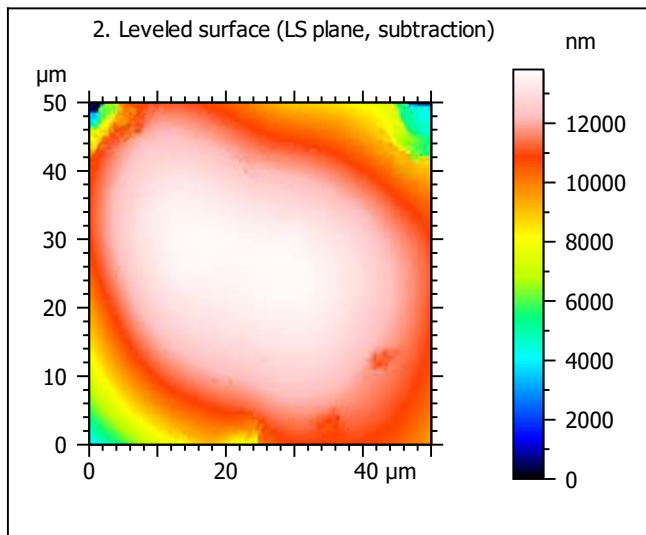
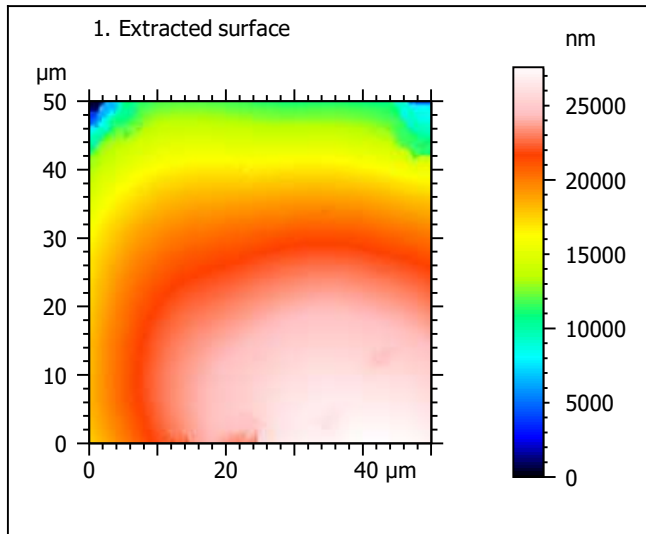
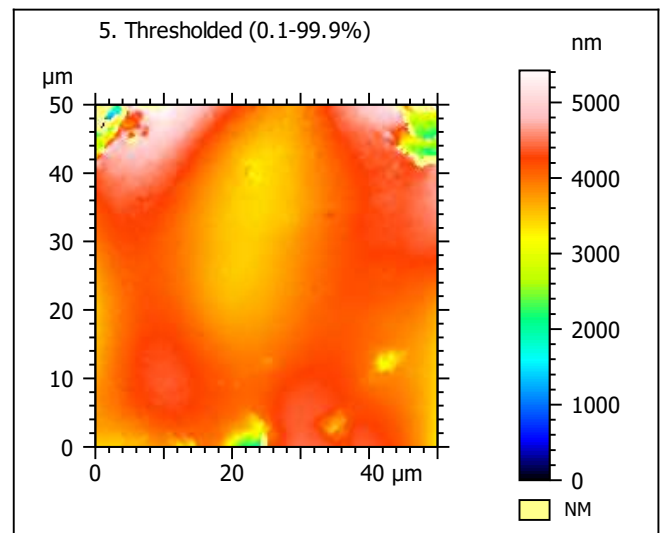
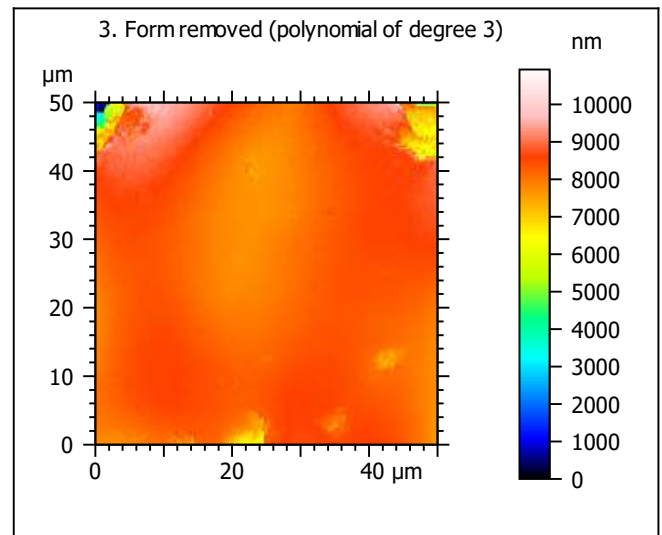


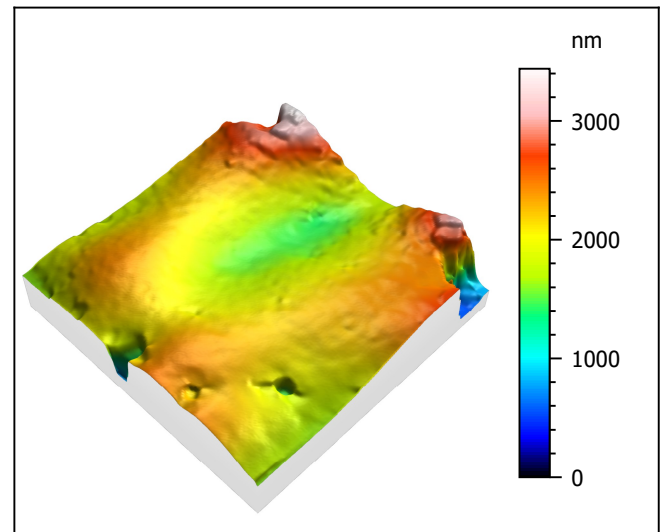
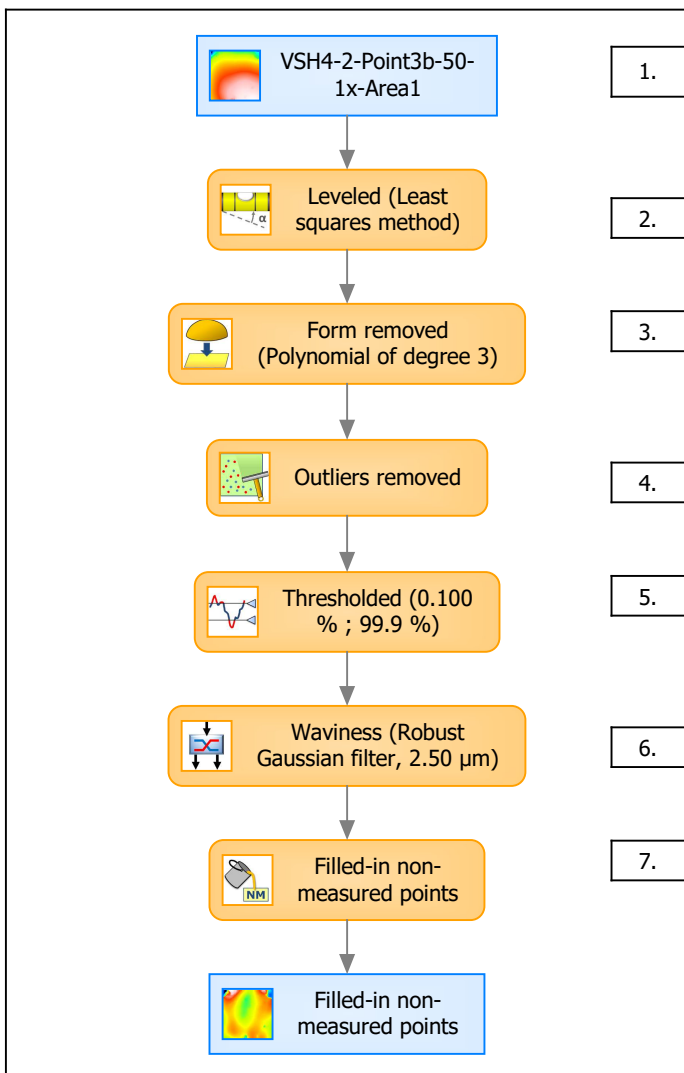
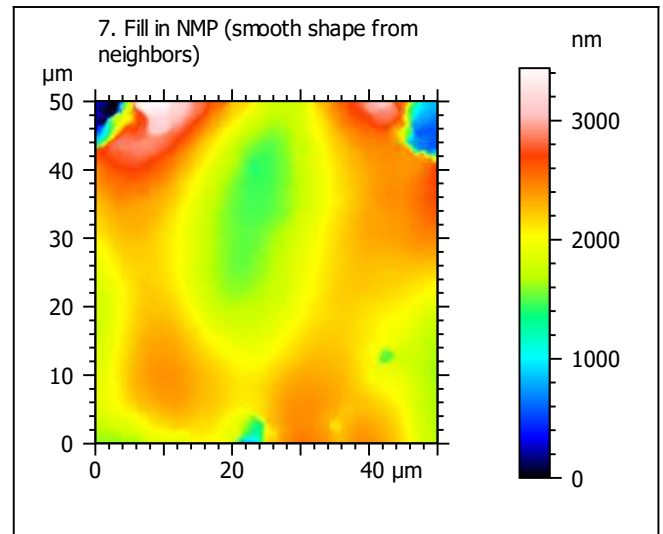
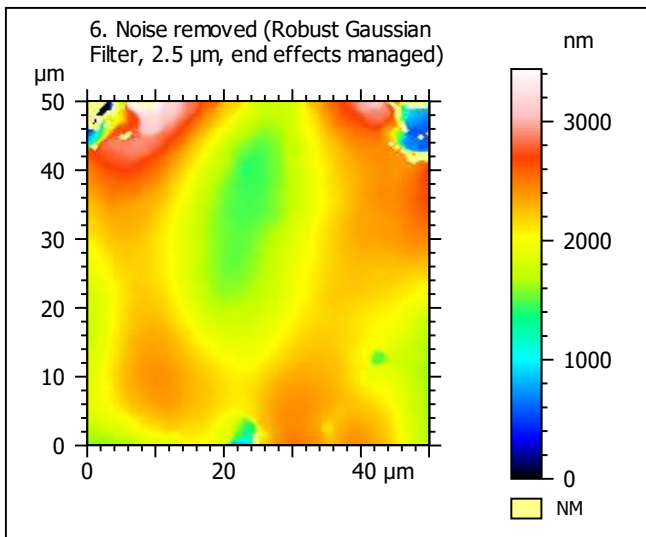
Template to process all extracted 50x50  $\mu\text{m}$  surfaces, acquired with the LEXT 4000 with the 50x/0.95 objective at 1x zoom

## A. Processing



Identity card			
Name:	VSH4-2-Point3b-50-1x-Area1		
File path:	D:\Data\Ant...\VSH4-2-Point3b-50-1x-Area1.sur		
Axis:	X		
Length:	50.0	μm	
Size:	201	points	
Spacing:	0.250	μm	
Axis:	Y		
Length:	50.0	μm	
Size:	201	points	
Spacing:	0.250	μm	
Axis:	Z		
Length:	27577	nm	
Size:	16096	digits	
Spacing:	1.71	nm	
NMP ratio:	0.00 % (0 Pts)		





Identity card			
Name:	VSH4-2-Point3b-50-1x-Area1 > Levelled (Leas...		
Axis:	X		
Length:	50.0	μm	
Size:	201	points	
Spacing:	0.250	μm	
Axis:	Y		
Length:	50.0	μm	
Size:	201	points	
Spacing:	0.250	μm	
Axis:	Z		
Length:	3440	nm	
Size:	2008	digits	
Spacing:	1.71	nm	
NMP ratio:	0.00 % (0 Pts)		

**Analyses:**

**8. ISO 25178**

**9. Furrow**

**10. Texture isotropy and direction**

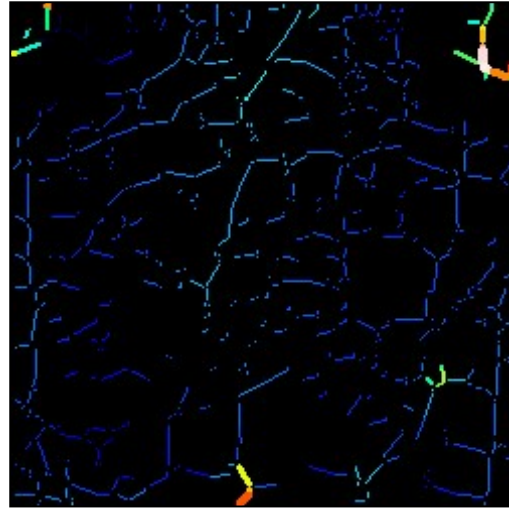
**11. SSFA**

## B. Analyses

### 8. ISO 25178-2 parameters on surface #7

ISO 25178		
Height Parameters		
Sq	386	nm
Ssk	-0.776	
Sku	6.87	
Sp	1367	nm
Sv	2073	nm
Sz	3440	nm
Sa	282	nm
Functional Parameters		
Smr	10.3	%
Smc	374	nm
Sxp	681	nm
Spatial Parameters		
Sal	5.46	μm
Str	0.425	
Std	42.5	°
Hybrid Parameters		
Sdq	0.196	
Sdr	1.33	%
Functional Parameters (Volume)		
Vm	0.026	μm <sup>3</sup> /μm <sup>2</sup>
Vv	0.399	μm <sup>3</sup> /μm <sup>2</sup>
Vmp	0.026	μm <sup>3</sup> /μm <sup>2</sup>
Vmc	0.308	μm <sup>3</sup> /μm <sup>2</sup>
Vvc	0.348	μm <sup>3</sup> /μm <sup>2</sup>
Vvv	0.0515	μm <sup>3</sup> /μm <sup>2</sup>

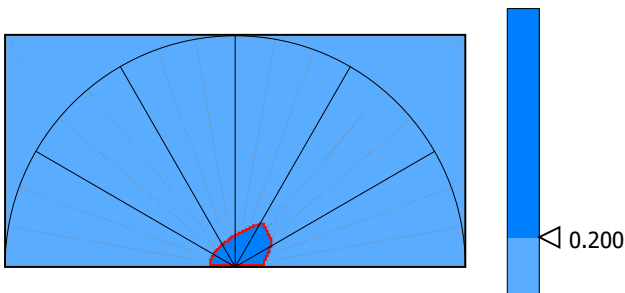
### 9. Furrow analysis surface #7



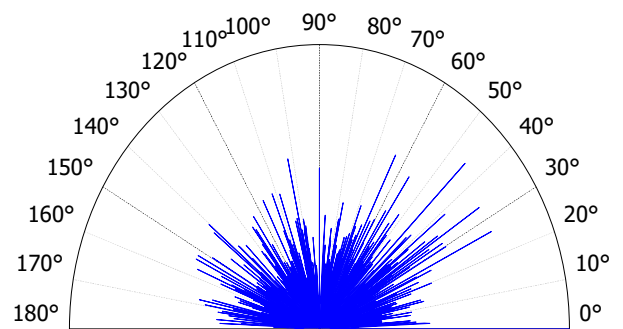
All furrows are shown.

Parameters	Value	Unit
Maximum depth of furrows	1107	nm
Mean depth of furrows	203	nm
Mean density of furrows	2040	cm/cm2

### 10. Texture isotropy and direction on surface #7



Parameters	Value	Unit
Isotropy	47.8	%
Periodicity	*****	%
Period	*****	μm
Direction of period	*****	°



Parameters	Value	Unit
Isotropy	42.5	%
First Direction	0.287	°
Second Direction	45.0	°
Third Direction	33.8	°

